

**SONY**  
make.believe

SURFACE  
MOUNTER

Electronic Part Mounter

# SI-G200MK5

High-speed mounter for better productivity

Multifunction high speed mounter to support the size of parts from 0402(metric) up to  $\square$ 25mm.

Sony's original 2 Planet Heads with 24 nozzles (12 each) achieve high area productivity and low power consumption.

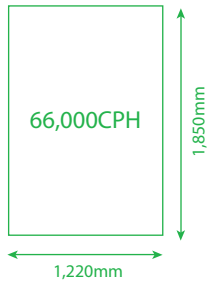


Sony Manufacturing Systems Corporation

# Electronic Part Mounter SI-G200MK5

## High productivity & space saving design

The unit has a space-saving footprint of only 1.22m wide by 1.85m deep. Its maximum placement speed is 66,000CPH with an area productivity of nearly 30,000CPH/m<sup>2</sup>.



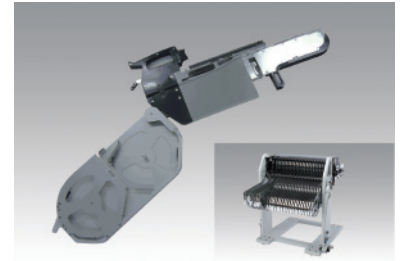
## Reduced running cost

Sony's original rotating planet head is light weight, so the energy consumption is very low. The unit uses minimum air and maximizes your ROI.



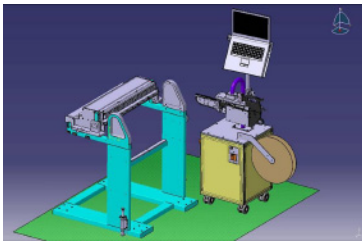
## Intelligent cassette\*

Unique hanging design ensures safety and prevents parts from cracking. It also offers traceability.



## IC set up station\*

Multiple checks prevent errors during off-line setup for intelligent cassettes. Verifies reel information and writes to cassettes using simple operations.



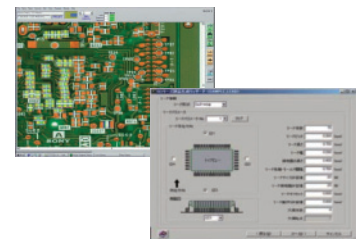
## PDX (Product Explorer)\*

Receives and distributes production data and performs device management at will. Improves your productivity, traceability and quality levels through remote machine control.



## CPS Pro 4\*

This software optimizes the layout of nozzles and parts supply on all the SI series. Equipped with the same GUI as the unit's display, it is even easier to use.



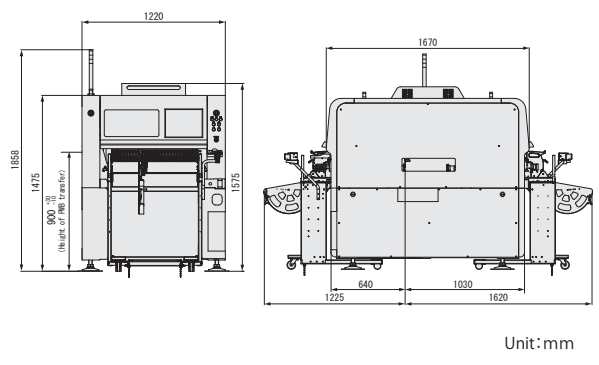
\*Option

## Specifications

Electronic Part Mounter	
Model name	SI-G200MK5
Machine type	2-head high-speed chip shooter      2-head high speed mounter
PWB size	Single conveyor : 50mm×50mm-460mm×410mm Dual conveyor* : 50mm×50mm-330mm×250mm Thickness : 0.5mm-3.0mm
Component size range	0402-3216      Height : -2.0mm □9.0mm      Height : -1.6mm Moving camera : 0402-□12mm Fixed camera* : □25mm Height : -6.0mm
Placement speed	Single conveyor : 59,000CPH Dual conveyor : 66,000CPH Single conveyor : 56,000CPH Dual conveyor : 62,000CPH
Mounting accuracy (3σ)	40 μm
Cassette load capacity**	Front : 58 cassettes      Rear : 58 cassettes
Power supply	AC3-ph 200V±10%, 50/60Hz, 2.5kVA ( Other voltages also available )
Dimensions	W1,220mm×D1,850mm×H1,575mm ( Excluding signal tower )
Weight	2,150kg

\* Option \*\* 8mm width ※ Above figures are subject to vary on the conditions. Please contact our sales reps for details.

## External dimensions



Unit: mm

⚠ Safety Precautions: To use the product safely, read and understand the contents of the instruction manual before use. ● Standards, specifications and appearance are subject to change due to continual improvements without prior notice.

**Sony Manufacturing Systems Corporation**  
<http://www.sonysms.co.jp/>

The contents of this literature are as of April 2011