

Electronic Part Mounter
SI-G200

Multi-function high-speed mounter

Multifunction high speed mouter to support the size of parts from 0603(metric) up to 100mm×50mm
2 rotating heads with 16 nozzles(8 each) in a cylindrical configuration achieve multi-fuction and high speed.
Various options are available to support broad range of use.



Electronic Part Mounter SI-G200

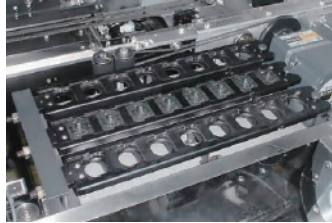
Rotating multi-function head

2 rotating heads equipped with 8 nozzles each arranged in a cylindrical configuration pickup the parts, and a 2 megapixel CCD camera performs batch recognition. The unit achieves a tact time of 0.16 sec.



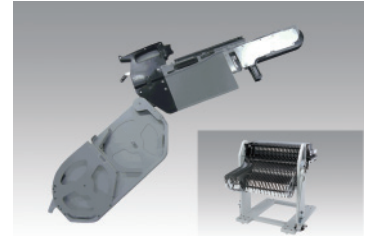
Supports a broad range of parts*

The unit is equipped with automatic nozzle changer that is capable of storing 24 nozzles. It supports parts size 0603(metric) to 100mm×50mm.



Intelligent cassette*

Unique hanging design ensures safety and prevents parts from cracking. It also offers traceability.



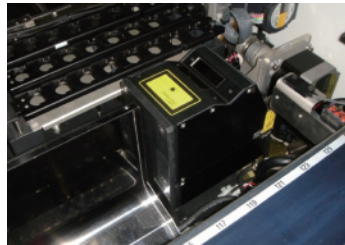
Dip Unit*

This is a flux and solder paste coating unit for POP mounting. Coating material is supplied automatically.



Coplanarity system*

This system inspects leads and solder balls of the large parts such as QFP and BGA.



Tray changer*

This tray changer can store up to 30 trays divided in an upper and lower cabinet, which enables the non-stop operation by tray alternation.



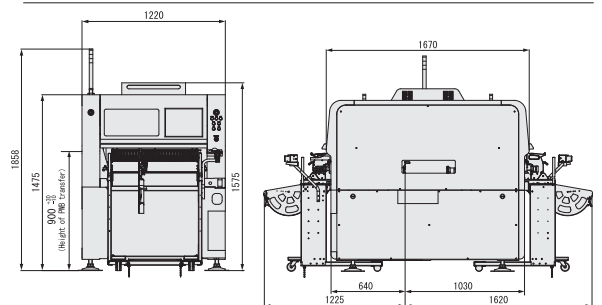
* Option

Specifications

Electronic Part Mounter	
Model name	SI-G200
Machine type	2-head multi-function mounter
PWB size	50mm×50mm-460mm×410mm Thickness : 0.5mm-3.0mm
Component size range	0603(metric)-100mm×50mm Height : -13mm
Placement speed	22,500CPH
Mounting accuracy (3σ)	40 μm
Cassette load capacity**	Front : 58 cassettes Rear : 58 cassettes or 30 trays + 17 intelligent cassette (or 13 mechanical cassettes)
Power supply	AC3-ph 200V±10%, 50/60Hz, 2.5kVA (Other voltages also available)
Dimensions	W1,220mm×D1,850mm×H1,575mm (Excluding signal tower)
Weight	2,300kg

* Option ** 8mm width ※ Above figures are subject to vary on the conditions. Please contact our sales reps for details.

External dimensions



Unit: mm

⚠ Safety Precautions: To use the product safely, read and understand the contents of the instruction manual before use. ● Standards, specifications and appearance are subject to change due to continual improvements without prior notice.

Sony Manufacturing Systems Corporation

<http://www.sonysms.co.jp/>

The contents of this literature are as of April 2011