

Electronic Part Mounter

SI-F209

Mounter for large and odd-shaped parts

SI-F209 supports large, odd-shaped components up to 150mm in diameter.

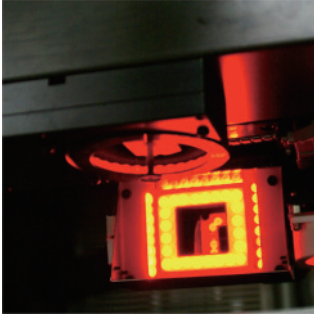
Equipped with flying vision & flying nozzle change function to increase productivity.



Electronic Part Mounter SI-F209

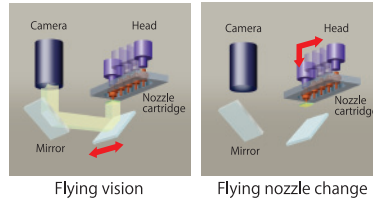
Supports large, odd-shaped parts

The unit is equipped with a multifunction head that is capable of mounting parts ranging from size 2012 to ϕ 150mm. The unit also automatically corrects the pick up position on the parts to improve the pick up rate.



Reduces loss in tact time

To increase productivity, the unit features flying vision and flying nozzle change functions, which respectively perform parts recognition and nozzle changes, while the head is in motion after picking up or placing parts.



Coplanarity system*

This system inspects leads and solder balls of the large parts such as QFP and BGA.



Dip Unit*

This is a flux and solder paste coating unit for POP mounting. Coating material is supplied automatically.



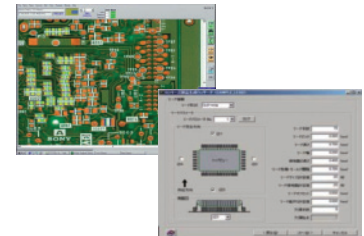
PDX (Product Explorer)*

Receives and distributes production data and performs device management at will. Improves your productivity, traceability and quality levels through remote machine control.



CPS Pro 4*

This software optimizes the layout of nozzles and parts supply on all the SI series. Equipped with the same GUI as the unit's display, it is even easier to use.



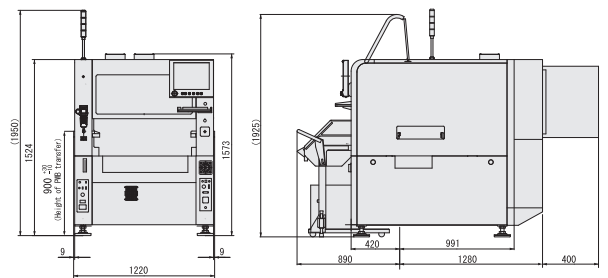
*Option

Specifications

Compact-sized Fine-pitch Chip Mounter	
Model name	SI-F209
Machine type	For large, odd-shaped parts mounter
PWB size	50mm×50mm-460mm×360mm Thickness : 0.5mm-2.6mm
Component size range	Moving camera : 2012-□32mm Fixed camera : - ϕ 150mm Height : -25mm
Placement speed	Moving camera : 7,660CPH (Intelligent cassette*) 7,340CPH (Mechanical cassette) Fixed camera : 2,500CPH
Mounting accuracy (3 σ)	Chip : 60 μ m VQFP : 50 μ m
Cassette load capacity**	Front : 58 intelligent cassettes or 40 mechanical cassettes Rear : 40 trays × 2
Power supply	AC3-ph., 200V \pm 10%, 50/60Hz, 1.9kVA (Other voltages also available)
Dimensions	W1,220mm×D1,700mm×H1,524mm (Excluding signal tower)
Weight	1,800kg

* Option ** 8mm width ※ Above figures are subject to vary on the conditions. Please contact our sales reps for details.

External dimensions



Unit:mm

△ Safety Precautions: To use the product safely, read and understand the contents of the instruction manual before use. ● Standards, specifications and appearance are subject to change due to continual improvements without prior notice.

Sony Manufacturing Systems Corporation

<http://www.sonymss.co.jp/>

The contents of this literature are as of April 2011